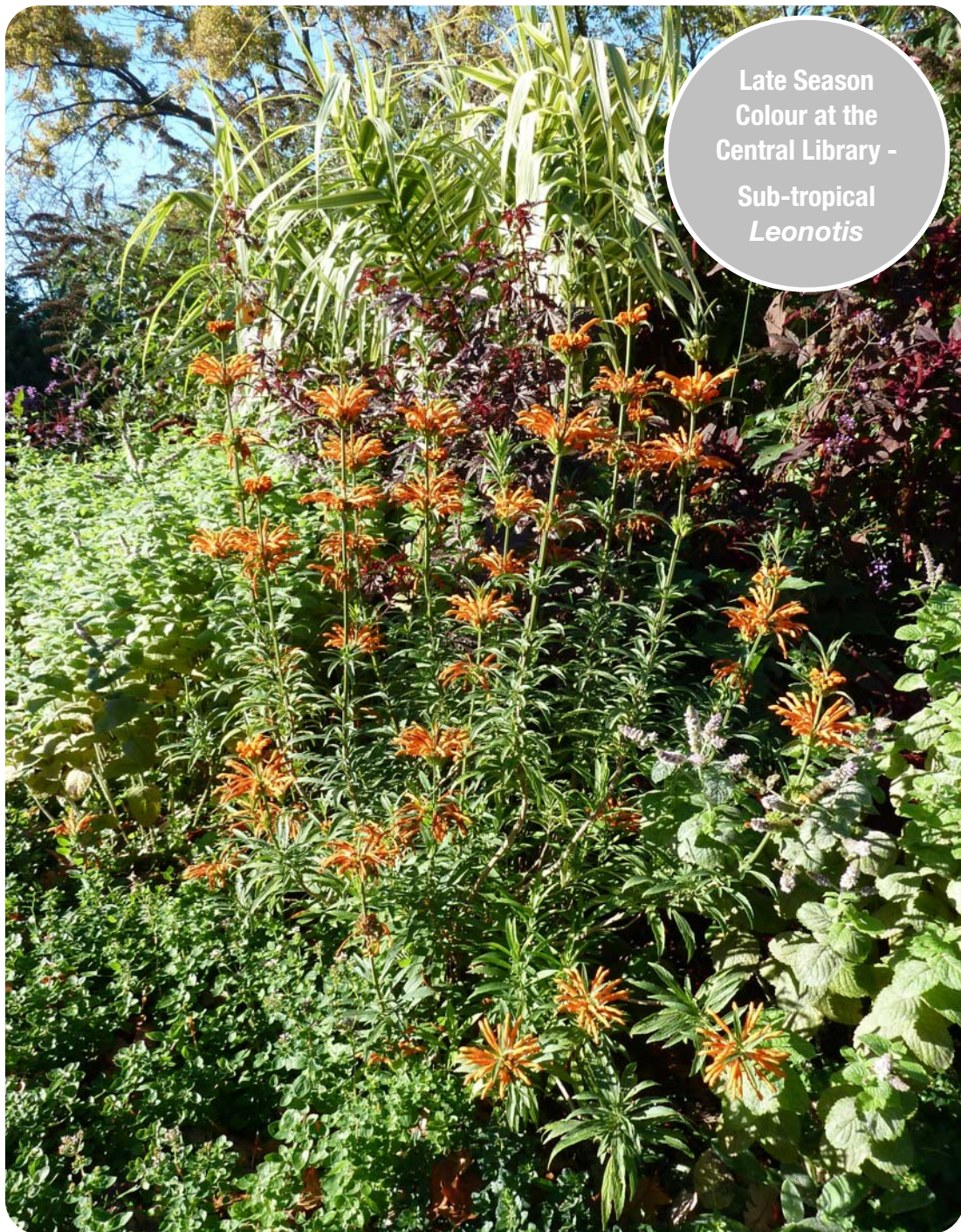


November 2013

*Where Gardeners come to flourish*



# Newsletter



Late Season  
Colour at the  
Central Library -  
Sub-tropical  
*Leonotis*

## NEXT MEETING:

Monday, November 11th, 7:30 p.m.  
doors open at 6:30

Location: Knox Presbyterian,  
MacMillan Hall  
89 Dunn Street

Speaker: Theo J. Blom

Retired Associate Professor University of  
Guelph Presents: Peonies: A Hobby Grown  
Out of Hand

## WHAT'S INSIDE:

President's Message	2
Events & Notices	2
Proposed Budget	3
Master Gardener Corner	4
Design/Hort Schedule	5
Fun with Flowers 2014	6
Projects & Amaryllis Sale	7
Duties	8



## President's Message

As the garden wraps up for another year, I have decided to try harvesting and then growing the seeds of some of our garden's daylilies. Simple enough; the remaining seed pods are nice and dry and easy to collect. Interestingly, some produce more seeds than others. Our most extravagant plant has the least seeds per pod, also the least pods. For a guide I am referring to a back issue of our Newsletter (October 2012 – you can find a copy on our website). Why choose to replicate the plants this way when it is so much easier to just divide the plants? Curiosity mainly, I would like to see if the pollination of the flowers in our garden will create true seedlings, or maybe something similar but equally interesting. Plus a few of these daylilies are very young and have not created a dense clump that could be divided. Will I be disappointed with the results? Hey, if I get any results I will be very happy. Any seedling that develops into a mature daylily and shows the tiniest resemblance to its parent will be all the success I could hope for.

It is this process of creating something new that makes gardening so challenging and rewarding. Taking a known entity and adding different stimulation creates something new and yet similar.

Our society is very much the same. Every so often, when new volunteers come to a position, we create similar yet different ways of accomplishing things. Take the newsletter; there have been many editors putting together the newsletter over the years. Each has put hers/his stamp on the newsletter, but it ever remains the OHS Newsletter.

Now with this being the last newsletter produced by current editor Barbara Phillips-Conroy, I would like to thank her for producing such a wonderful product. Pleasing to the eye, well constructed, full of good reading, Barbara's newsletter has been a pleasure.

The same can be said for all the volunteers in our Society. We lend our support and skills. Maybe not the same skill set as the previous person, but with a spirit of bold curiosity we give it a try. And the results are always special.

As of November, Siân Minich from the telephone committee and Christel Mahncke and Judy Bridges from the draw table are stepping down. Our society thanks you all for your time and efforts in a job well done.

So, how about taking on a challenge. Our September newsletter listed the positions on the Society's board and executive, which are open the end of the year. There are some members that have offered to stand, but each position is open to any member of the society. Maybe you want to try putting together a newsletter, running the draw table – we welcome your help. Our society will be new and yet similar, just like the daylilies grown from seed.

Stuart Gough

## Events & Notices

### Hamilton Fall Garden & Mum Show 2013

October 25 - November 3 10:00 a.m. to 8:00 p.m.

[www.hamiltonmumshow.com](http://www.hamiltonmumshow.com)

### Royal Botanical Gardens

#### Volunteer Invasive Shrub Removal Saturdays

26 October, 2,9,16 November

RSVP Lindsay Barr 905-527-1158 x 257

#### Ecosystem Recovery Forum

5 November 8:30 a.m. - 4:30 p.m. \$15.00

<http://tickets.rbg.ca/PEO/show.asp?shcode=10>

#### Pruning Your Trees & Shrubs

2 November 2:00 - 5:00 p.m. \$30.00

<http://tickets.rbg.ca/PEO/show.asp>

#### Holiday Traditions

Events continue 14 November - 5 January: Train Show, breakfast with Santa, and choral performances throughout the holiday season.

<http://www.rbg.ca/holidaytraditions>



<b>President:</b>	Stuart Gough <a href="mailto:president.ohs@oakvillehort.org">president.ohs@oakvillehort.org</a>
<b>Membership:</b>	Elizabeth Thompson <a href="mailto:membrship.ohs@oakvillehort.org">membrship.ohs@oakvillehort.org</a>
<b>Mailing:</b>	Joan Paris
<b>Secretary:</b>	Veronica Heiderich
<b>Treasurer:</b>	Fred Teng
<b>Website:</b>	<a href="http://www.oakvillehort.org">www.oakvillehort.org</a>
<b>Post Box:</b>	Box 69605, 109 Thomas St Oakville, ON L6J 7R4

*The Oakville Horticultural Society Newsletter is published 10 times a year from September to June. All photographs and articles are produced by the current Editor Barbara Phillips-Conroy unless otherwise noted. Future submissions should be sent to the new editor at [editor.ohs@oakvillehort.org](mailto:editor.ohs@oakvillehort.org) no later than the 3rd Thursday of each month.*

## Proposed Budget 2014

### Revenue

Description	Oct 1 Balance	Budget 2013	Budget 2014
BULBS, PLANTS, AND SEEDS	370	250	250
DRAW TABLE	413	500	400
MAY PLANT SALE	5,327	5,000	5,000
MEMBERSHIP	2,245	2,500	2,500
INTEREST	525	700	400
DONATIONS	19	-	-
GARDEN TOUR	4,043	1,000	2,000
ONTARIO GRANT	1,500	1,500	1,500
MISCELLANEOUS	244	600	600
JUNIOR PROGRAM REGISTRATIONS	130	50	100
NON FUND RAISING ACTIVITIES	300	-	-
	15,116	12,100	12,750

Lower draw table sales

Below budget in 2013 - same due to membership increase

Lower interest rate and decreased savings

Higher target for garden tour revenue

Higher target for garden tour revenue

### Expenses

Description	Oct 1 Balance	Budget	Expense s
PUBLICITY	-	300	- 500
SOCIAL CONVENOR	- 174	- 400	- 400
BULBS, PLANTS, AND SEEDS	- 216	- 500	- 250
LIBRARY	-	-	- 100
PUBLIC PLANTING	- 147	- 1,000	- 4,000
COMMUNITY PROGRAMS	-	- 500	- 500
MEMBERSHIPS IN OTHER ORGANIZATIONS	- 1,175	- 1,250	- 1,250
EXECUTIVE	- 867	- 800	- 1,000
DRAW TABLE CONVENOR	- 188	- 400	- 300
MONTHLY SHOWS	- 601	- 1,600	- 1,600
GARDEN TOUR CONVENOR	- 253	- 500	- 500
NEWSLETTER	- 1,140	- 1,600	- 1,600
MONTHLY PROGRAMS	- 2,568	- 2,800	- 3,200
JUNIOR PROGRAM	- 835	- 1,000	- 1,000
MAY PLANT SALE	- 1,810	- 2,500	- 3,000
EQUIPMENT/IMPROVEMENTS	-	- 300	- 600
MISCELLANEOUS	- 195	- 600	- 600
	- 10,169	- 15,750	- 20,400

Funding to increase awareness of OHS

Assumes breakeven

Purchase of magazine subscription, books

Upkeep of Anderson Parkette and Fields of Sping project

Increased costs: room rental, PO Box, cqs, awards, OHA convention

Increased cost of speakers

Potential costs to relocate plant sale / additional advertising

Bookshelves, projector bulbs, wireless headset

### Net Income

4,947 - 3,650 - 7,650

### Society Equity As of 1/Oct/20

51,723

# MASTER GARDENER CORNER

**What's the best way to kill critters in pots and plants that are coming back in after living outside during the summer?**

Inviting that gorgeous tropical into your home is an excellent idea. Any time I start the year with a tropical from the previous year, I figure that my savings can be applied to a new fabulous plant. While it isn't possible to get rid of absolutely every bug, it is possible to keep them down to an absolute minimum if you follow these steps:

I'm going to use the *Mandevilla* pictured above as an example.

#1 I know it's hard, but cut the plant back. I'm going to take off about 2 meters.

#2 Inspect the remaining plant and remove all leaves that aren't nice and healthy. Look carefully to see if there are aphids, scale, spider mite or other leaf sucking creatures. If the plant is really buggy - toss it away. I know Ed Lawrence would have you persevere, but I firmly believe there are better things to do than spend hours in the bathtub with your plant and a Q-tip soaked in rubbing alcohol.

#3. Prepare a bucket of water and soap slightly bigger than your pot. Dunk the pot portion into the bucket. Remove and do again with just water. If an army of creatures leaves the soil to

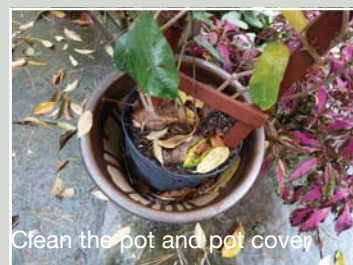
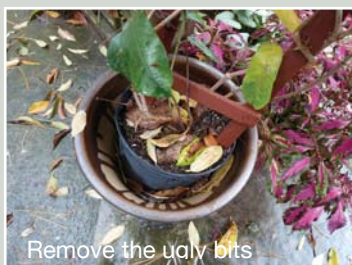
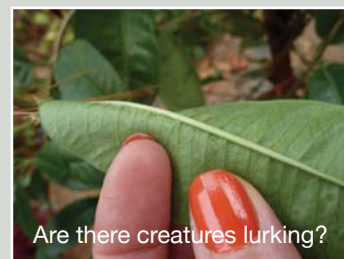
swim to safety, abandon the plant to the compost. You don't want them in the house.

#4 Prepare a spray bottle of water and soap (not detergent). Spray the plant carefully getting both sides of the leaves and the stems. Let sit briefly. Spray again with just water to rinse all the soap residue of the leaves.

#5. If you are using the same pot cover in the house, clean it carefully inside and out with a brush to make sure it is not housing any critters.

#6 (a) Quarantine the plant - don't put it with your other plants just yet. Give it bright light away from heat registers. It will most likely lose a few leaves over the next 6 weeks or so as it adapts to the lower light levels and drier atmosphere. Water as needed. (b) If it is bug free after 6 weeks, introduce it to the rest of your tropical family. It isn't necessary to fertilize over the winter.

With a little bit of effort you can ensure that you're bringing in a plant that is as bug-free as possible and have a start on next year's flower garden without having to spend another cent.





# Design & Horticulture Schedule

## Design Division

1. Class of Distinction
2. Chairman's Trophy
3. General
4. Novice
5. Miniatures

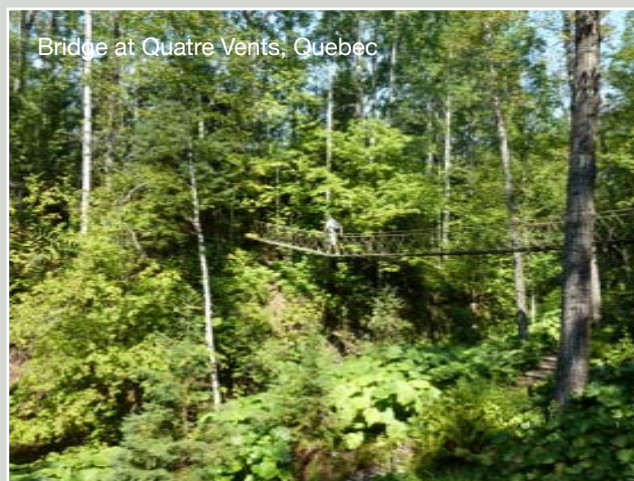
## All That Jazz

- Day & Night  
It's Only a Paper Moon  
Anything Goes  
Take the A Train  
I've Got Rhythm

- A design  
A design  
A design  
A parallel design  
A design in a niche 5" high and 4-1/2" wide x 3" deep

## Horticultural Division

6. Annual - 1 stem
7. Annuals, Collection of 3 kinds - 1 stem each
8. Branch showing fall colour, cut to 36" or less
9. Cactus, Holiday
10. Chrysanthemum - 1 bloom or spray
11. Dried flowers - 1 bunch grown & dried by the exhibitor
12. House plant grown for flowers or fruit
13. House plant grown for foliage
14. House plant trailing or climbing
15. Perennial, other - 1 stem
16. Rosa (rose), red - 1 spray or bloom
17. Rosa (rose), other - 1 spray or bloom
18. Vegetable - 1 specimen or bunch
19. A craft item (must have some horticultural content) made by the exhibitor and not previously shown
20. Educational exhibit
21. Any other cultivar (A.O.C.) - 1 stem or bloom



## Special Exhibits

22. Dish garden or indoor planter, not to exceed 18" in any direction (see O.J.E.S. pgs. 74, 95, 103)

## Photography Schedule

23. Stormy Weather A picture taken during a storm, must have horticultural content
24. Bridging the Gap A picture taken showing a bridge, must have horticultural content
25. Tiptoe Through the... tulips of course
26. On Close Inspection Bug(s) on a plant/flower
27. A River Runs By It Any shoreline or riverbank with some horticultural content



## Up-Coming & On-Going Projects: Fun With Flowers

Please join us as we host another flower arranging event to celebrate Family Day:



**DATE:** Monday, February 17, 2014

**LOCATION:** Iroquois Ridge Community Centre

**TIME:** Session **One:** 10:30 -10:50  
Session **Two:** 11:00 - 11:20  
Session **Three:** 11:30 - Noon



We need volunteers to :

**Find sponsors:** This event takes an abundance of fresh flowers. Local grocers and flower shops have generously donated in previous years. Hopefully, we'll get a great response again this year!

**Pick up donated flowers** on the Saturday or Sunday before the event and deliver them to my home. (I will condition, group and cut the flowers to the appropriate size.)

**Assist on the day** of the event with set up, flower distribution after each session, and clean-up at the end of the event.

Looking forward to enjoying February 17 with **you!** This activity is warmly received by children and adults alike.

If you are able to join us, please call or email me at : 905-842-6074 or [linda.tock@sympatico.ca](mailto:linda.tock@sympatico.ca) and I'll fill you in on the details of this fun event.

Article & Photos Linda Tock





## Up-Coming & On-Going Projects:

### The Anderson Parkette

Thank you so much to all the volunteers who gave their time and expertise to keep this corner of Oakville looking great. Compared with the traditional Head Street Parkette, 20 meters away, you can see how the design, planting and hard work of the volunteers have made this a place that people and wee creatures can enjoy. While not hugely labour intensive, it is year-round project, so if you are able to your lend support in the coming year we would welcome your help.

Anderson Parkette Mid-October



Head Street Parkette Mid-October



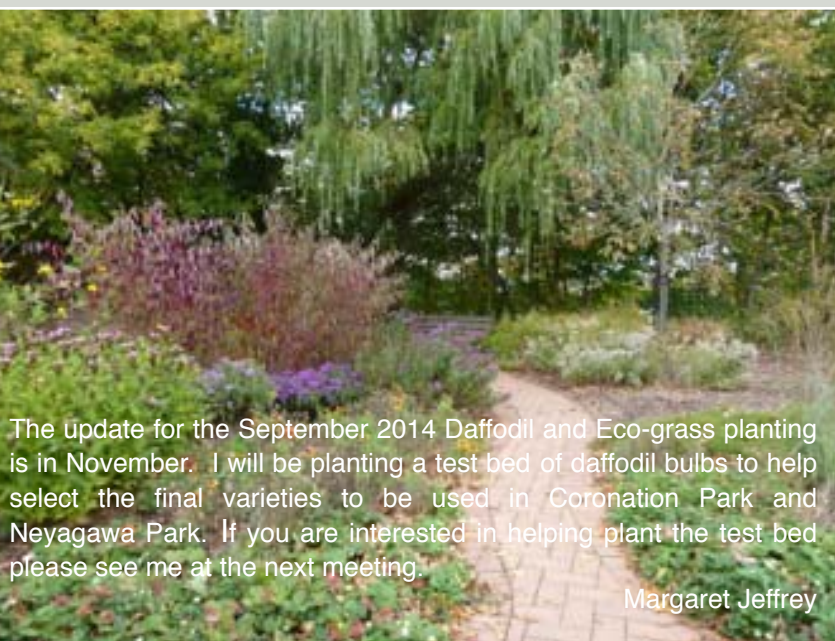
Late blossoms & seeds Anderson Parkette

### Amaryllis For Sale



We'll have three to four different types of amaryllis for sale at \$10.00 per bulb. If you plant them up immediately you may have

flowers by the end of December, or at least by January, when we all need a little colour in the house.



The update for the September 2014 Daffodil and Eco-grass planting is in November. I will be planting a test bed of daffodil bulbs to help select the final varieties to be used in Coronation Park and Neyagawa Park. If you are interested in helping plant the test bed please see me at the next meeting.

Margaret Jeffrey



## Up-Coming & On-Going Projects:

### 2014 Garden Tour



We're hoping to push the envelope even further this year with diverse styles and plant material. In addition to being just plain gorgeous, it would be nice to find a few gardens with state-of-the-art features, such as: a green roof (maybe even a shed roof trial project); permeable walkway and driveway installations; as well as vertical and/or raised bed applications that might inspire us to use small garden spaces more creatively.

We are interested in featuring a collection of gardens in the Douglas Avenue neighbourhood too. Traditional perennial through modern designs, all are of interest.

Please contact me at 905-338-5148 with your suggestions.

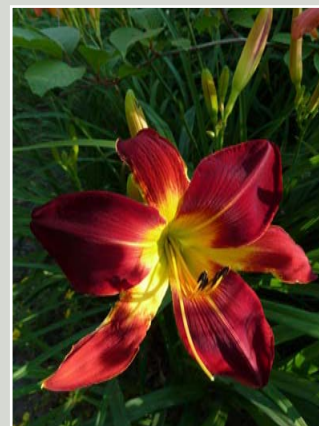
Christine Lee

### Volunteer Hours

Veronica Heiderich is compiling the society's volunteer hours for the year. Please Email your totals to her at [bvervah7@gmail.com](mailto:bvervah7@gmail.com).

### New for 2014

So much for subtle, natural and beige - decorative elements are going to be bright and cheerful based on what the wholesalers had on offer at Landscape Ontario's Garden & Floral Expo:



NEW MEMBERS	LIBRARY	CLERKING	SET-UP 9:00AM	REFRESHMENTS
Please welcome new members: Jennifer & Michael Reive	Veronica Heiderich	Helen Stevenson	Cathy Kavassalis John Raynor Rosanne Swalwell	Margie Bobko Elly Cooper Julie Douglas Kathy Graham